

DCXR Antibody (aa182-244)
Rabbit Polyclonal Antibody
Catalog # ALS16198**Specification**

DCXR Antibody (aa182-244) - Product Information

Application	WB, IHC-P
Primary Accession	Q7Z4W1
Reactivity	Human
Host	Rabbit
Clonality	Polyclonal
Calculated MW	26kDa KDa
Dilution	WB~~1:1000 IHC-P~~N/A

DCXR Antibody (aa182-244) - Additional Information**Gene ID** 51181**Other Names**

L-xylulose reductase, XR, 1.1.1.10, Carbonyl reductase II, Dicarboxyl/L-xylulose reductase, Kidney dicarboxyl reductase, kiDCR, Short chain dehydrogenase/reductase family 20C member 1, Sperm surface protein P34H, DCXR, SDR20C1

Target/Specificity

Human DCXR

Reconstitution & Storage

Keep as concentrated solution. Aliquot and store at -20°C or below. Avoid multiple freeze-thaw cycles.

Precautions

DCXR Antibody (aa182-244) is for research use only and not for use in diagnostic or therapeutic procedures.

DCXR Antibody (aa182-244) - Protein Information**Name** DCXR**Synonyms** SDR20C1**Function**

Catalyzes the NADPH-dependent reduction of several pentoses, tetroses, trioses, alpha-dicarbonyl compounds and L-xylulose. Participates in the uronate cycle of glucose metabolism. May play a role in the water absorption and cellular osmoregulation in the proximal renal tubules by producing xylitol, an osmolyte, thereby preventing osmolytic stress from occurring in the renal tubules.

Cellular Location

Membrane; Peripheral membrane protein. Note=Probably recruited to membranes via an interaction with phosphatidylinositol.

Tissue Location

Highly expressed in kidney, liver and epididymis. In the epididymis, it is mainly expressed in the proximal and distal sections of the corpus region. Weakly or not expressed in brain, lung, heart, spleen and testis.

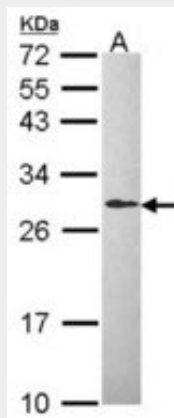
Volume

50 μ l

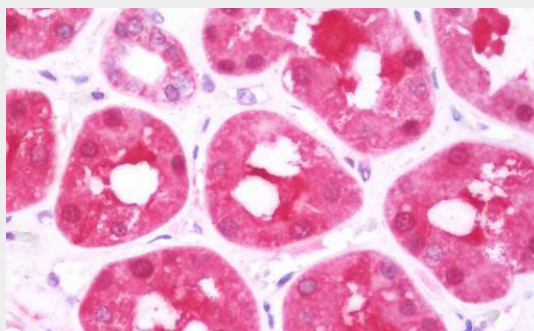
DCXR Antibody (aa182-244) - Protocols

Provided below are standard protocols that you may find useful for product applications.

- [Western Blot](#)
- [Blocking Peptides](#)
- [Dot Blot](#)
- [Immunohistochemistry](#)
- [Immunofluorescence](#)
- [Immunoprecipitation](#)
- [Flow Cytometry](#)
- [Cell Culture](#)

DCXR Antibody (aa182-244) - Images

Sample (30 ug of whole cell lysate). A: Hep G2 . 12% SDS PAGE. DCXR antibody diluted at 1:1000.



Anti-DCXR antibody IHC staining of human kidney.

DCXR Antibody (aa182-244) - Background

Catalyzes the NADPH-dependent reduction of several pentoses, tetroses, trioses, alpha-dicarbonyl compounds and L- xylulose. Participates in the uronate cycle of glucose metabolism. May play a role in the water absorption and cellular osmoregulation in the proximal renal tubules by producing xylitol, an osmolyte, thereby preventing osmolytic stress from occurring in the renal tubules.

DCXR Antibody (aa182-244) - References

Legare C.,et al.Endocrinology 140:3318-3327(1999).
Nakagawa J.,et al.J. Biol. Chem. 277:17883-17891(2002).
Xia X.Y.,et al.Zhonghua Nan Ke Xue 9:24-27(2003).
Huang C.,et al.Submitted (DEC-1998) to the EMBL/GenBank/DDBJ databases.
Liu Q.,et al.Submitted (APR-1999) to the EMBL/GenBank/DDBJ databases.